



REGINA CHAIN

PERFORMANCE IN MOTION

PRODUCTION RANGE

Steel and thermoplastic chains, modular belts and rubbers.



	TYPE	DESCRIPTION	FEATURES
STEEL	S	Carbon Steel	Through hardened carbon steel. Surface and core hardness of 43 HRC. Excellent strength and wear resistance. Not suitable in presence of water.
	SS - 4	Ferritic Stainless Steel	Cold rolled ferritic stainless steel. Good wear, mechanical and corrosion resistance. For food & beverage applications.
	P	Prima Performance Steel	Superior grade of cold rolled special ferritic stainless steel. Special Cr-Ni alloy offering very good wear and mechanical properties. Particularly suitable for high productivity lines (combiners and inliners).
	SS	Austenitic Stainless Steel	Cr-Ni austenitic cold rolled stainless steel. It guarantees the best corrosion resistance to withstand chemical attack. It offers very good wear resistance, due to work hardening and homogeneous chemical structure.
	NEW BS	Maintenance free carbon steel	Rollers base chains for maintenance free applications
ACETAL POM	WA White	White Acetal	DuPont™ Delrin® homopolymer acetal resin.
	UP Dark Brown	Ultra Performance Acetal Resin	DuPont™ Delrin® Ultra Performance special homopolymer acetal resin. Particularly suitable for applications where low coefficient of friction and contained dusting are needed.
	DK2™ Dark Green	Superior Grade of Acetal Resin (DK²)	Delrin® acetal resin reinforced with Kevlar® , newly developed by Regina and DuPont™, able to reach the lowest coefficient of friction with maximum wear resistance. Thanks to the superior properties of DK2™ , the usage of lubricants can be drastically reduced or even eliminated without losing performance in conveyor applications.
	AS Black	Antistatic Acetal Resin	Conductive acetal resin particularly suitable for all applications where static charge on the chain must be avoided.
POLYAMIDE PA	AR Black	Abrasion Resistant Polyamide	Suitable for glass manufacturing applications. Reinforced polyamide with excellent wear resistance and low dusting. Only for dry running applications.
POLYPROPYLENE PP	P Light Blue	Reinforced Polypropylene	For FliteTop® Chains. Reinforced polypropylene that guarantees the best corrosion resistance to withstand chemical attack and an optimum high temperature resistance.
	PP Grey	Special Polypropylene	For Matveyor® Belts. Special polypropylene that guarantees the best corrosion resistance to withstand chemical attack and an optimum high temperature resistance.
POLYESTER PBT	ULF Light Grey	Ultra Low Friction Polyester Resin	Polyester resin that offers good mechanical strength in combination with low coefficient of friction.
RUBBER	PG Black	Nitrilic Rubber	For stainless steel chains. Nitrilic rubber with hardness of 55 ShA and high wear resistance that guarantees an excellent product grip in inclined/declined conveyors.
	Thermo plastic Green	Thermoplastic Rubber	Special Thermoplastic rubber with hardness from 50 ShA up to 70 ShA and optimum wear resistance that guarantees exceptional product grip in inclined/declined conveyors and elevators/lowerators, extending life without losing elasticity.
	EPDM Black	EPDM Rubber	For gripper chain series. EPDM rubber with hardness of 60 ShA guarantees an excellent grip and high temperatures resistance.

DuPont™ Delrin® and DuPont™ Kevlar® are registered trade marks of E.I. DuPont De Nemours and Associates.

Applications.

Chains.



		PRODUCTS				
		STEEL CHAINS				
CONVEYED PRODUCTS	APPLICATIONS	Carbon Steel (S)	Ferritic (SS - 4,P)	Austenitic (SS)	PHD Series	PG Rubberized Series
CANS (2-3 PIECES)	Depalletizer					
	Inliner/combiner					
	Mass conveyors					
	Accumulation tables					
	Sterilizers / Rinsers Elevators / Lowerators					
	Infeed packaging machines					
	Packaging machines					
	Packaged products convey					
	Inclined conveyors					
PET BOTTLES	Inliner/combiner					
	Mass conveyors					
	Accumulation tables					
	Sterilizers / Rinsers Elevators / Lowerators					
	Infeed packaging machines					
	Packaging machines					
	Packaged products convey					
	Inclined conveyors					
	GLASS BOTTLES*	Depalletizer		■		
Inliner/combiner			■		■	
Mass conveyors			■		■	
Accumulation tables			■			
Sterilizers / Rinsers Elevators / Lowerators						
Infeed packaging machines			■		■	
Packaging machines			■		■	
Packaged products convey			■		■	
Inclined conveyors						■
GLASS BOTTLES	Inliner/combiner	■	■	■	■	
	Mass conveyors	■	■	■	■	
	Accumulation tables	■	■	■	■	
	Palletizer	■	■	■	■	
	Omega / Blowing Machines					
SPECIAL APPLICATIONS	AUTOMOTIVE / MECHANICAL IND.	■	■		■	
	CHEMICAL, DETERGENTS, PHARMACEUTICAL AND COSMETICS IND.			■		
	DAIRY IND.					

FOOD / BEVERAGE / BOTTLING APPLICATIONS
GLASS MFG.
SPECIAL APPLICATIONS

PRODUCTS								
PLASTIC CHAINS					SPECIAL CHAINS			
Acetal (UP)	■	Abrasion Resistant (AR)	Polypropylene (P)	Rubberized Top	Two Piece	Gripper	LBP	Biplanar
■	■							
■	■							
■	■							
■	■					■		
■	■							
■	■			■	■		■	
■	■			■				
■	■			■				
■	■					■		
■	■			■	■		■	
■	■							
■	■	■						
■	■	■						
■	■	■						
■	■	■				■		
■	■	■			■			
■	■		■					
								■

For more detailed information, contact Regina Technical Department.
* In case of returnable glass bottles, please contact Regina Application Engineers

Applications.

Chains/Belts.



SPECIAL APPLICATIONS	CONVEYED PRODUCTS	APPLICATIONS	PRODUCTS							
			LIGHT DUTY SHORT PITCH (1/2")			LIGHT DUTY (1" PITCH)				
			600 300	500 200	HF 500 HF 200	1600	1500	RR 1600	RR 1500 1110	HF 1600 HFS 1600
FOOD / BEVERAGE / BOTTLING APPLICATIONS	CANS (2-3 PIECES)	Depalletizer	■	■		■	■			
		Inliner/combiner				■	■			
		Mass conveyors	■	■		■	■			
		Accumulation tables	■	■		■	■		■	
		Warmer								
		Infeed packaging machines	■	■		■	■		■	
		Packaging machines		■	■			■		
		Packaged products convey	■	■	■	■	■		■	■
	PET BOTTLES	Inliner/combiner				■				
		Mass conveyors	■	■		■				
Accumulation tables		■	■		■	■		■		
Warmer										
Infeed packaging machines		■	■		■			■		
Packaging machines		■	■	■			■			
Packaged products convey		■	■	■	■	■		■	■	
GLASS BOTTLES	Depalletizer	■			■					
	Inliner/combiner				■					
	Mass conveyors	■			■					
	Accumulation tables									
	Pasteurizer								■	
	Infeed packaging machines	■			■					
	Packaging machines	■	■	■			■			
	Packaged products convey	■		■	■				■	
GLASS BOTTLES	Inliner/combiner				■					
	Mass conveyors	■			■					
	Accumulation tables	■			■					
	Palletizer	■			■					
PHARMACEUTICAL DETERGENT COSMETICS CONTAINERS	Conveyors lines	■	■		■	■	■			
	BAKERY	Conveyors lines	■	■		■				
PAPER/CARDBOARD	Conveyors lines	■			■					

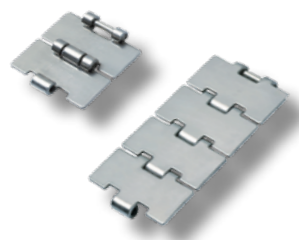
For more detailed information, contact Regina Technical Department.

SPECIAL APPLICATIONS	CONVEYED PRODUCTS	APPLICATIONS	PRODUCTS														
			MEDIUM DUTY (3/4" PITCH)		HEAVY DUTY (1" PITCH)				ULTOP® HEAVY DUTY UCC (1 1/2" PITCH)		SIDEFLEXING CHAINS (1" PITCH)			HEAVY DUTY RAISED RIB (2" PITCH)	SIDEFLEXING BELTS (1 1/4" PITCH)		
			7300	7200	USP USPM	HF USPM HFS USPM	LBP USPM	UCC	UCC 138 (3/4" Pitch)	783M 783T	782M	793T 793M 793L	3120	2555 2555T	2555HT 2555HT-SR	2555HTB 2555HTB-SR	
FOOD / BEVERAGE / BOTTLING APPLICATIONS	CANS (2-3 PIECES)	Depalletizer	■	■													
		Inliner/combiner	■	■				■		■	■						
		Mass conveyors	■	■				■		■	■						
		Accumulation tables	■	■									■				
		Warmer											■				
		Infeed packaging machines	■	■				■									
		Packaging machines							■								
		Packaged products convey	■	■	■	■	■	■							■	■	■
	PET BOTTLES	Inliner/combiner	■					■		■							
		Mass conveyors	■					■		■							
Accumulation tables		■	■														
Warmer												■					
Infeed packaging machines		■															
Packaging machines								■									
Packaged products convey		■	■	■	■	■	■							■	■	■	
GLASS BOTTLES	Depalletizer	■					■		■				■				
	Inliner/combiner	■					■		■		■	■					
	Mass conveyors	■					■		■		■						
	Accumulation tables						■										
	Pasteurizer												■				
	Infeed packaging machines	■					■		■								
	Packaging machines							■									
	Packaged products convey	■		■	■		■		■						■	■	
GLASS BOTTLES	Inliner/combiner	■					■		■		■		■				
	Mass conveyors	■					■		■		■						
	Accumulation tables	■					■						■				
	Palletizer	■					■		■								
PHARMACEUTICAL DETERGENT COSMETICS CONTAINERS	Conveyors lines	■	■				■			■	■	■					
	BAKERY	Conveyors lines	■	■			■		■		■		■		■	■	
PAPER/CARDBOARD	Conveyors lines	■					■		■					■	■		

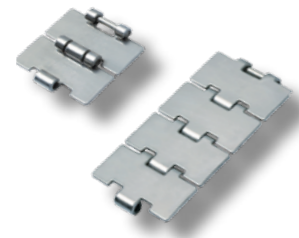
Straight running steel chains.



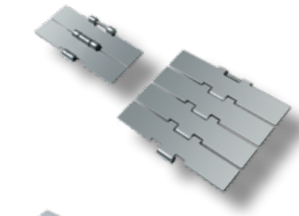
803 - Mini Hinge											
Width		Pitch		Thickness		Gap		Hinge		Materials	
Inches	mm	Inches	mm	Inches	mm	Inches	mm	Inches	mm	Plate	
1 ¼	31,8	1 ½	38,1	0.118	3	0.110	2,8	0.866	22	P	
1 ¾	44,5	1 ½	38,1	0.118	3	0.110	2,8	0.866	22	P	



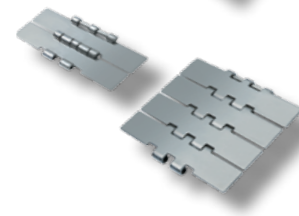
915 - Single Hinge, Reduced Plate Gap (1,6 mm)											
Width		Pitch		Thickness		Gap		Hinge		Materials	
Inches	mm	Inches	mm	Inches	mm	Inches	mm	Inches	mm	Plate	
2 ¼	57,1	1 ½	38,1	0.118	3	0.063	1,6	1.654	42		P
2 ½	63,5	1 ½	38,1	0.118	3	0.063	1,6	1.654	42		P
2 5/8	66,7	1 ½	38,1	0.118	3	0.063	1,6	1.654	42		P
3 ¼	82,6	1 ½	38,1	0.118	3	0.063	1,6	1.654	42	S	SS-4 P SS
3.30	83,8	1 ½	38,1	0.118	3	0.063	1,6	1.654	42		SS-4 P
3 ½	88,9	1 ½	38,1	0.118	3	0.063	1,6	1.654	42		P
4	101,6	1 ½	38,1	0.118	3	0.063	1,6	1.654	42	S	P SS
4 ½	114,3	1 ½	38,1	0.118	3	0.063	1,6	1.654	42	S	SS-4 P SS
6	152,4	1 ½	38,1	0.118	3	0.063	1,6	1.654	42	S	P SS
7 ½	190,5	1 ½	38,1	0.118	3	0.063	1,6	1.654	42	S	SS-4 P SS



HD 915 - Single Hinge, Reduced Plate Gap (1,6 mm), Heat Treated Pin											
Width		Pitch		Thickness		Gap		Hinge		Materials	
Inches	mm	Inches	mm	Inches	mm	Inches	mm	Inches	mm	Plate	
3 ¼	82,6	1 ½	38,1	0.118	3	0.063	1,6	1.654	42	P	
3.30	83,8	1 ½	38,1	0.118	3	0.063	1,6	1.654	42	P	
4 ½	114,3	1 ½	38,1	0.118	3	0.063	1,6	1.654	42	P	
7 ½	190,5	1 ½	38,1	0.118	3	0.063	1,6	1.654	42	P	



HD 9157 - Heavy Duty Single Hinge, Reduced Plate Gap, Heat Treated Pin											
Width		Pitch		Thickness		Gap		Hinge		Materials	
Inches	mm	Inches	mm	Inches	mm	Inches	mm	Inches	mm	Plate	
7 ½	190,5	1 ½	38,1	0.118	3	0.063	1,6	2.244	57	P	



2815 - Double Hinge											
Width		Pitch		Thickness		Gap		Hinge		Materials	
Inches	mm	Inches	mm	Inches	mm	Inches	mm	Inches	mm	Plate	
7 ½	190,5	1 ½	38,1	0.118	3	0.071	1,8	3.150	80	S	SS-4 P SS

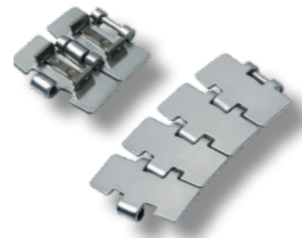
Sideflexing steel chains.



881 - Bevel											
Width		Pitch		Thickness		Sideflexing Radius		Hinge		Materials	
Inches	mm	Inches	mm	Inches	mm	Inches	mm	Inches	mm	Plate	
3 ¼	82,6	1 ½	38,1	0.118	3	18	457,2	1.693	43	S	SS
4 ½	114,3	1 ½	38,1	0.118	3	24	609,6	1.693	43	S	SS
7 ½	190,5	1 ½	38,1	0.118	3	24	609,6	1.693	43	S	SS



881T - TAB											
Width		Pitch		Thickness		Sideflexing Radius		Hinge		Materials	
Inches	mm	Inches	mm	Inches	mm	Inches	mm	Inches	mm	Plate	
3 ¼	82,6	1 ½	38,1	0.118	3	18	457,2	1.693	43	S	SS
4 ½	114,3	1 ½	38,1	0.118	3	24	609,6	1.693	43	S	SS
7 ½	190,5	1 ½	38,1	0.118	3	24	609,6	1.693	43	S	SS



981 - Bevel, Reduced Plate Gap											
Width		Pitch		Thickness		Sideflexing Radius		Hinge		Materials	
Inches	mm	Inches	mm	Inches	mm	Inches	mm	Inches	mm	Plate	
3 ¼	82,6	1 ½	38,1	0.118	3	18	457,2	1.693	43	P	
3.30	83,8	1 ½	38,1	0.118	3	18	457,2	1.693	43	P	
4 ½	114,3	1 ½	38,1	0.118	3	24	609,6	1.693	43	P	
7 ½	190,5	1 ½	38,1	0.118	3	24	609,6	1.693	43	P	



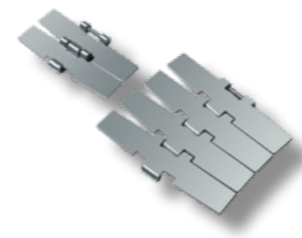
981T - TAB, Reduced Plate Gap											
Width		Pitch		Thickness		Sideflexing Radius		Hinge		Materials	
Inches	mm	Inches	mm	Inches	mm	Inches	mm	Inches	mm	Plate	
3 ¼	82,6	1 ½	38,1	0.118	3	18	457,2	1.693	43	P	
3.30	83,8	1 ½	38,1	0.118	3	18	457,2	1.693	43	P	
4 ½	114,3	1 ½	38,1	0.118	3	24	609,6	1.693	43	P	
7 ½	190,5	1 ½	38,1	0.118	3	24	609,6	1.693	43	P	



981M - Magnetic, Reduced Plate Gap											
Width		Pitch		Thickness		Sideflexing Radius		Hinge		Materials	
Inches	mm	Inches	mm	Inches	mm	Inches	mm	Inches	mm	Plate	
3 ¼	82,6	1 ½	38,1	0.118	3	19.685	500	1.654	42	SS-4	P
3.30	83,8	1 ½	38,1	0.118	3	19.685	500	1.654	42	SS-4	P
4 ½	114,3	1 ½	38,1	0.118	3	19.685	500	1.654	42		P
7 ½	190,5	1 ½	38,1	0.118	3	19.685	500	1.654	42		P



HD 981M - Magnetic, Reduced Plate Gap, Heat Treated Pin											
Width		Pitch		Thickness		Sideflexing Radius		Hinge		Materials	
Inches	mm	Inches	mm	Inches	mm	Inches	mm	Inches	mm	Plate	
3 ¼	82,6	1 ½	38,1	0.118	3	19.685	500	1.654	42	P	
3.30	83,8	1 ½	38,1	0.118	3	19.685	500	1.654	42	P	
4 ½	114,3	1 ½	38,1	0.118	3	19.685	500	1.654	42	P	
7 ½	190,5	1 ½	38,1	0.118	3	19.685	500	1.654	42	P	

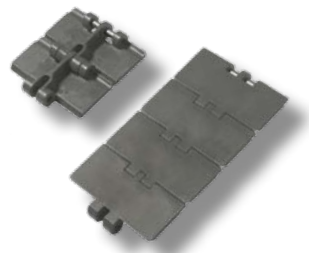


HD 9857M - Magnetic, Heavy Duty Single Hinge, Heat Treated Pin											
Width		Pitch		Thickness		Sideflexing Radius		Hinge		Materials	
Inches	mm	Inches	mm	Inches	mm	Inches	mm	Inches	mm	Plate	
7 ½	190,5	1 ½	38,1	0.118	3	29.528	750	2.244	57	P	

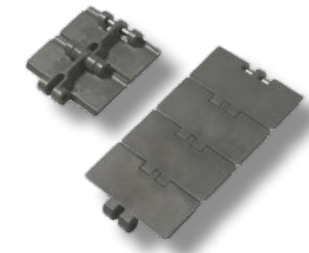


982T - TAB, Reduced Sideflexing Radius											
Width		Pitch		Thickness		Sideflexing Radius		Hinge		Materials	
Inches	mm	Inches	mm	Inches	mm	Inches	mm	Inches	mm	Plate	
3 ¼	82,6	1 ½	38,1	0.118	3	7.874	200	1.693	43	SS	

FliteTop® Straight running plastic chains.



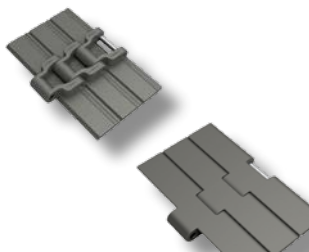
820 - Single Hinge											
Width		Pitch		Thickness		Backflexing Radius		Hinge		Materials	
Inches	mm	Inches	mm	Inches	mm	Inches	mm	Inches	mm	Plate	AR
3 ¼	82,6	1 ½	38,1	0.157	4	1.575	40	1.638	41,6	UP	DK ² AR
3.30	83,8	1 ½	38,1	0.157	4	1.575	40	1.638	41,6	UP	DK ²
4	101,6	1 ½	38,1	0.157	4	1.575	40	1.638	41,6	UP	DK ² AR
4 ½	114,3	1 ½	38,1	0.157	4	1.575	40	1.638	41,6	UP	DK ² AR
6	152,4	1 ½	38,1	0.157	4	1.575	40	1.638	41,6	UP	DK ²
7.50	190,5	1 ½	38,1	0.157	4	1.575	40	1.638	41,6	UP	DK ²



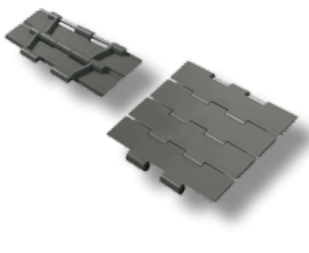
831 - Single Hinge, Reinforced Top Plate											
Width		Pitch		Thickness		Backflexing Radius		Hinge		Materials	
Inches	mm	Inches	mm	Inches	mm	Inches	mm	Inches	mm	Plate	AR
3 ¼	82,6	1 ½	38,1	0.189	4,8	1.575	40	1.638	41,6	UP	DK ² AR
3.30	83,8	1 ½	38,1	0.189	4,8	1.575	40	1.638	41,6	UP	DK ²
4 ½	114,3	1 ½	38,1	0.189	4,8	1.575	40	1.638	41,6	UP	DK ² AR
7.50	190,5	1 ½	38,1	0.189	4,8	1.575	40	1.638	41,6	UP	DK ²



828 - Reinforced Single Hinge, Reduced Plate Gap											
Width		Pitch		Thickness		Backflexing Radius		Hinge		Materials	
Inches	mm	Inches	mm	Inches	mm	Inches	mm	Inches	mm	Plate	AR
3 ¼	82,6	1 ½	38,1	0.157	4	1.575	40	1.654	42	UP	DK ² AR
3.30	83,8	1 ½	38,1	0.157	4	1.575	40	1.654	42	UP	DK ²
4 ½	114,3	1 ½	38,1	0.157	4	1.575	40	1.654	42	UP	DK ² AR

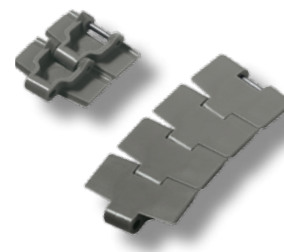


8257 - Heavy Duty Single Hinge, Reinforced Top Plate											
Width		Pitch		Thickness		Backflexing Radius		Hinge		Materials	
Inches	mm	Inches	mm	Inches	mm	Inches	mm	Inches	mm	Plate	AR
7 ½	190,5	1 ½	38,1	0.189	4,8	1.575	40	2.244	57	UP	DK ²
10	254	1 ½	38,1	0.189	4,8	1.575	40	2.244	57	UP	DK ²
12	304,8	1 ½	38,1	0.189	4,8	1.575	40	2.244	57	UP	DK ²

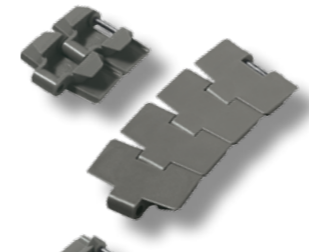


821 - Double Hinge, Reinforced Top Plate											
Width		Pitch		Thickness		Backflexing Radius		Hinge		Materials	
Inches	mm	Inches	mm	Inches	mm	Inches	mm	Inches	mm	Plate	AR
7 ½	190,5	1 ½	38,1	0.189	4,8	1.575	40	5.374	136,5	UP	DK ²
10	254	1 ½	38,1	0.189	4,8	1.575	40	5.374	136,5	UP	DK ²
12	304,8	1 ½	38,1	0.189	4,8	1.575	40	5.374	136,5	UP	DK ²

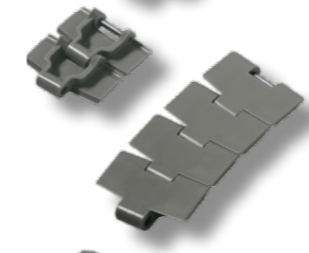
FliteTop® Sideflexing plastic chains.



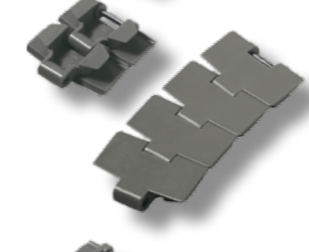
880 - Bevel											
Width		Pitch		Thickness		Sideflexing Radius		Hinge		Materials	
Inches	mm	Inches	mm	Inches	mm	Inches	mm	Inches	mm	Plate	AR
3 ¼	82,6	1 ½	38,1	0.157	4	18	457,2	1.693	43	UP	DK ² AR
4 ½	114,3	1 ½	38,1	0.157	4	19.685	500	1.693	43	UP	DK ² AR



880T - TAB											
Width		Pitch		Thickness		Sideflexing Radius		Hinge		Materials	
Inches	mm	Inches	mm	Inches	mm	Inches	mm	Inches	mm	Plate	AR
3 ¼	82,6	1 ½	38,1	0.157	4	18	457,2	1.689	42,9	UP	DK ² AR
3.30	83,8	1 ½	38,1	0.157	4	18	457,2	1.689	42,9	UP	DK ²
4 ½	114,3	1 ½	38,1	0.157	4	19.685	500	1.689	42,9	UP	DK ² AR



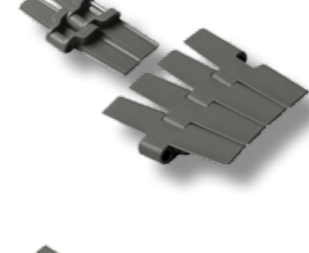
879 - Bevel, Reinforced Top Plate											
Width		Pitch		Thickness		Sideflexing Radius		Hinge		Materials	
Inches	mm	Inches	mm	Inches	mm	Inches	mm	Inches	mm	Plate	AR
3 ¼	82,6	1 ½	38,1	0.189	4,8	18	457,2	1.693	43	UP	DK ²
4 ½	114,3	1 ½	38,1	0.189	4,8	19.685	500	1.693	43	UP	DK ²



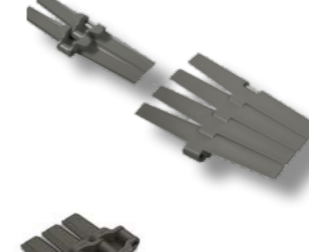
879T - TAB, Reinforced Top Plate											
Width		Pitch		Thickness		Sideflexing Radius		Hinge		Materials	
Inches	mm	Inches	mm	Inches	mm	Inches	mm	Inches	mm	Plate	AR
3 ¼	82,6	1 ½	38,1	0.189	4,8	18	457,2	1.689	42,9	UP	DK ²
3.30	83,8	1 ½	38,1	0.189	4,8	18	457,2	1.689	42,9	UP	DK ²
4 ½	114,3	1 ½	38,1	0.189	4,8	19.685	457,2	1.689	42,9	UP	DK ²



880M RG - Magnetic, Reduced Plate Gap											
Width		Pitch		Thickness		Sideflexing Radius		Hinge		Materials	
Inches	mm	Inches	mm	Inches	mm	Inches	mm	Inches	mm	Plate	AR
3 ¼	82,6	1 ½	38,1	0.157	4	19.685	500	1.654	42	UP	DK ²
3.30	83,8	1 ½	38,1	0.157	4	19.685	500	1.654	42	UP	DK ²
4 ½	114,3	1 ½	38,1	0.157	4	19.685	500	1.654	42	UP	DK ² AR



882 - Bevel, Heavy Duty Single Hinge, Reinforced Top plate											
Width		Pitch		Thickness		Sideflexing Radius		Hinge		Materials	
Inches	mm	Inches	mm	Inches	mm	Inches	mm	Inches	mm	Plate	AR
4 ½	114,3	1 ½	38,1	0.189	4,8	24	609,6	2.402	61	UP	DK ²
7 ½	190,5	1 ½	38,1	0.189	4,8	24	609,6	2.402	61	UP	DK ²
10	254	1 ½	38,1	0.189	4,8	24	609,6	2.402	61	UP	DK ²
12	304,8	1 ½	38,1	0.189	4,8	24	609,6	2.402	61	UP	DK ²



882T - TAB, Heavy Duty Single Hinge, Reinforced Top plate											
Width		Pitch		Thickness		Sideflexing Radius		Hinge		Materials	
Inches	mm	Inches	mm	Inches	mm	Inches	mm	Inches	mm	Plate	AR
4 ½	114,3	1 ½	38,1	0.189	4,8	24	609,6	2.244	57	UP	DK ²
7 ½	190,5	1 ½	38,1	0.189	4,8	24	609,6	2.244	57	UP	DK ²
10	254	1 ½	38,1	0.189	4,8	24	609,6	2.244	57	UP	DK ²
12	304,8	1 ½	38,1	0.189	4,8	24	609,6	2.244	57	UP	DK ²



882M - Magnetic, Heavy Duty Single Hinge, Reinforced Top Plate											
Width		Pitch		Thickness		Sideflexing Radius		Hinge		Materials	
Inches	mm	Inches	mm	Inches	mm	Inches	mm	Inches	mm	Plate	AR
7 ½	190,5	1 ½	38,1	0.189	4,8	24	609,6	2.244	57	UP	DK ²
10	254	1 ½	38,1	0.189	4,8	24	609,6	2.244	57	UP	DK ²
12	304,8	1 ½	38,1	0.189	4,8	24	609,6	2.244	57	UP	DK ²



878T - TAB, Reinforced Top Plate, Reduced Sideflexing Radius											
Width		Pitch		Thickness		Sideflexing Radius		Hinge		Materials	
Inches	mm	Inches	mm	Inches	mm	Inches	mm	Inches	mm	Plate	AR
3 ¼	82,6	1 ½	38,1	0.189	4,8	7.874	200	1.689	42,9	UP	DK ² AR



880TA - TAB, Vacuum Series											
Width		Pitch		Thickness		Sideflexing Radius		Hinge		Materials	
Inches	mm	Inches	mm	Inches	mm	Inches	mm	Inches	mm	Plate	Rubber
3 1/4	82,6	1 1/2	38,1	0.157	4	18	457,2	1.689	42,9	UP	Thermoplastic

FliteTop® Rubberized chains.

G 915 - Straight running, Steel plates, Single hinge											
Width		Pitch		Thickness		Gap		Hinge		Materials	
Inches	mm	Inches	mm	Inches	mm	Inches	mm	Inches	mm	Plate	Rubber
3 1/4	82,6	1 1/2	38,1	0.118	3	0.063	1,6	1.654	42	P	PG
4 1/2	114,3	1 1/2	38,1	0.118	3	0.063	1,6	1.654	42	P	PG
7 1/2	190,5	1 1/2	38,1	0.118	3	0.063	1,6	1.654	42	P	PG

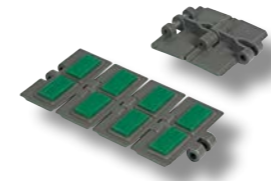
HDG 9157 - Straight running, Steel plates, Heavy duty single hinge, Heat treated pin											
Width		Pitch		Thickness		Gap		Hinge		Materials	
Inches	mm	Inches	mm	Inches	mm	Inches	mm	Inches	mm	Plate	Rubber
7 1/2	190,5	1 1/2	38,1	0.118	3	0.063	1,6	2.244	57	P	PG

G 2815 - Straight running, Steel plates, Double hinge											
Width		Pitch		Thickness		Gap		Hinge		Materials	
Inches	mm	Inches	mm	Inches	mm	Inches	mm	Inches	mm	Plate	Rubber
7 1/2	190,5	1 1/2	38,1	0.118	3	0.071	1,8	3.150	80	P	PG

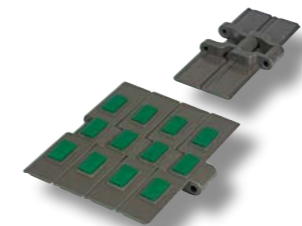
G 981T - Sideflexing TAB, Steel plates											
Width		Pitch		Thickness		Sideflexing radius		Hinge		Materials	
Inches	mm	Inches	mm	Inches	mm	Inches	mm	Inches	mm	Plate	Rubber
3 1/4	82,6	1 1/2	38,1	0.118	3	18	457,2	1.693	43	P	PG
7 1/2	190,5	1 1/2	38,1	0.118	3	24	609,6	1.693	43	P	PG

G 981M - Sideflexing Magnetic, Steel plates											
Width		Pitch		Thickness		Sideflexing radius		Hinge		Materials	
Inches	mm	Inches	mm	Inches	mm	Inches	mm	Inches	mm	Plate	Rubber
3 1/4	82,6	1 1/2	38,1	0.118	3	18	457,2	1.693	43	P	PG
7 1/2	190,5	1 1/2	38,1	0.118	3	24	609,6	1.693	43	P	PG

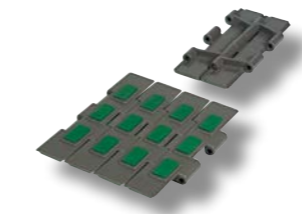
HDG 9857M - Sideflexing Magnetic, Steel plates, Heavy duty single hinge, Heat treated pin											
Width		Pitch		Thickness		Sideflexing radius		Hinge		Materials	
Inches	mm	Inches	mm	Inches	mm	Inches	mm	Inches	mm	Plate	Rubber
7 1/2	190,5	1 1/2	38,1	0.118	3	29.528	750	2.244	57	P	PG



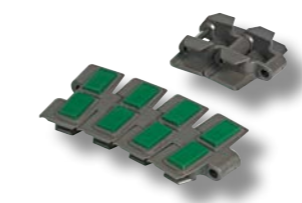
HFX 820 - Straight running, Plastic plates, Single hinge											
Width		Pitch		Thickness		Backflexing Radius		Hinge		Materials	
Inches	mm	Inches	mm	Inches	mm	Inches	mm	Inches	mm	Plate	Rubber
3 1/4	82,6	1 1/2	38,1	0.157	4	1.575	40	1.638	41,6	UP	Thermoplastic
4	101,6	1 1/2	38,1	0.157	4	1.575	40	1.638	41,6	UP	Thermoplastic
4 1/2	114,3	1 1/2	38,1	0.157	4	1.575	40	1.638	41,6	UP	Thermoplastic
6	152,4	1 1/2	38,1	0.157	4	1.575	40	1.638	41,6	UP	Thermoplastic
7.50	190,5	1 1/2	38,1	0.157	4	1.575	40	1.638	41,6	UP	Thermoplastic



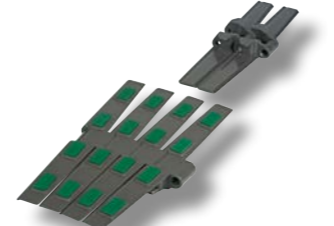
HFX 8257 - Straight running, Plastic plates, Heavy duty single hinge											
Width		Pitch		Thickness		Backflexing Radius		Hinge		Materials	
Inches	mm	Inches	mm	Inches	mm	Inches	mm	Inches	mm	Plate	Rubber
7 1/2	190,5	1 1/2	38,1	0.189	4,8	1.575	40	2.244	57	UP	Thermoplastic
10	254	1 1/2	38,1	0.189	4,8	1.575	40	2.244	57	UP	Thermoplastic
12	304,8	1 1/2	38,1	0.189	4,8	1.575	40	2.244	57	UP	Thermoplastic



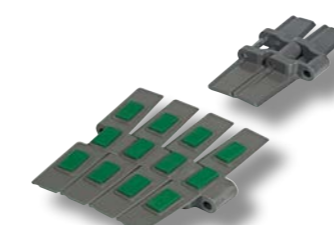
HFX 821 - Straight running, Plastic plates, Double hinge											
Width		Pitch		Thickness		Backflexing Radius		Hinge		Materials	
Inches	mm	Inches	mm	Inches	mm	Inches	mm	Inches	mm	Plate	Rubber
7 1/2	190,5	1 1/2	38,1	0.189	4,8	1.575	40	5.374	136,5	UP	Thermoplastic
10	254	1 1/2	38,1	0.189	4,8	1.575	40	5.374	136,5	UP	Thermoplastic
12	304,8	1 1/2	38,1	0.189	4,8	1.575	40	5.374	136,5	UP	Thermoplastic



HFX 880T - Sideflexing TAB, Plastic plates											
Width		Pitch		Thickness		Sideflexing Radius		Hinge		Materials	
Inches	mm	Inches	mm	Inches	mm	Inches	mm	Inches	mm	Plate	Rubber
3 1/4	82,6	1 1/2	38,1	0.157	4	18	457,2	1.689	42,9	UP	Thermoplastic
4 1/2	114,3	1 1/2	38,1	0.157	4	19.685	500	1.689	42,9	UP	Thermoplastic



HFX 882T - Sideflexing TAB, Plastic plates, Heavy duty single hinge											
Width		Pitch		Thickness		Sideflexing Radius		Hinge		Materials	
Inches	mm	Inches	mm	Inches	mm	Inches	mm	Inches	mm	Plate	Rubber
4 1/2	114,3	1 1/2	38,1	0.189	4,8	24	609,6	2.244	57	UP	Thermoplastic
7 1/2	190,5	1 1/2	38,1	0.189	4,8	24	609,6	2.244	57	UP	Thermoplastic
10	254	1 1/2	38,1	0.189	4,8	24	609,6	2.244	57	UP	Thermoplastic
12	304,8	1 1/2	38,1	0.189	4,8	24	609,6	2.244	57	UP	Thermoplastic



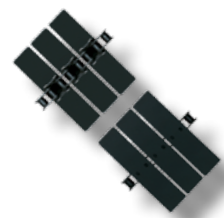
HFX 882M - Sideflexing Magnetic, Plastic plates, Heavy duty single hinge											
Width		Pitch		Thickness		Sideflexing Radius		Hinge		Materials	
Inches	mm	Inches	mm	Inches	mm	Inches	mm	Inches	mm	Plate	Rubber
7 1/2	190,5	1 1/2	38,1	0.189	4,8	24	609,6	2.244	57	UP	Thermoplastic
10	254	1 1/2	38,1	0.189	4,8	24	609,6	2.244	57	UP	Thermoplastic
12	304,8	1 1/2	38,1	0.189	4,8	24	609,6	2.244	57	UP	Thermoplastic



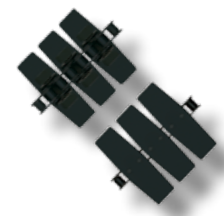
HFX 1873T - Two-piece, Sideflexing TAB, Plastic flight, 3/4" Pitch											
Width		Pitch		Thickness		Sideflexing Radius		Hinge		Materials	
Inches	mm	Inches	mm	Inches	mm	Inches	mm	Inches	mm	Base chain	Flight
3 1/4	82,6	3/4	19,05	0.157	4	14	355,6	1.264	32,1	S SS	UP
4 1/2	114,3	3/4	19,05	0.157	4	14	355,6	1.264	32,1	S SS	UP
6	152,4	3/4	19,05	0.157	4	18	457,2	1.264	32,1	S SS	UP
7 1/2	190,5	3/4	19,05	0.157	4	18	457,2	1.264	32,1	S SS	UP
10	254	3/4	19,05	0.157	4	18	457,2	1.264	32,1	S SS	UP
12	304,8	3/4	19,05	0.157	4	24	609,6	1.264	32,1	S SS	UP

FliteTop[®]

Two-piece steel flights.



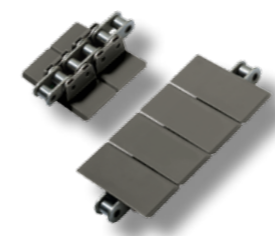
1864 - Straight Running											
Width		Pitch		Thickness		Gap		Hinge		Materials	
Inches	mm	Inches	mm	Inches	mm	Inches	mm	Inches	mm	Base chain	Flight
3 ¼	82,6	¾	19,05	0.118	3	0.126	3,2	1.063	27	S	SS
4 ½	114,3	¾	19,05	0.118	3	0.126	3,2	1.063	27	S	SS
6	152,4	¾	19,05	0.118	3	0.126	3,2	1.063	27	S	SS
7 ½	190,5	¾	19,05	0.118	3	0.126	3,2	1.063	27	S	SS



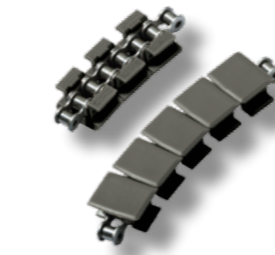
1874T - Sideflexing TAB, Flight Gap 8,2 mm											
Width		Pitch		Thickness		Sideflexing Radius		Hinge		Materials	
Inches	mm	Inches	mm	Inches	mm	Inches	mm	Inches	mm	Base chain	Flight
3 ¼	82,6	¾	19,05	0.118	3	15	381	1.252	31,8	S	SS
4 ½	114,3	¾	19,05	0.118	3	15	381	1.252	31,8	S	SS
6	152,4	¾	19,05	0.118	3	18	457,2	1.252	31,8	S	SS
7 ½	190,5	¾	19,05	0.118	3	24	609,6	1.252	31,8	S	SS



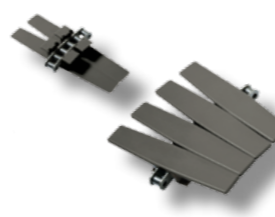
1874TM - Sideflexing TAB, Reduced Flight Gap (5,7 mm)											
Width		Pitch		Thickness		Sideflexing Radius		Hinge		Materials	
Inches	mm	Inches	mm	Inches	mm	Inches	mm	Inches	mm	Base chain	Flight
4 ½	114,3	¾	19,05	0.118	3	15	381	1.252	31,8	S	SS



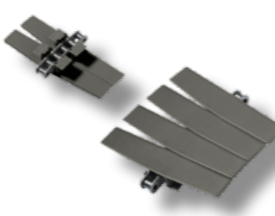
863 - Straight Running, ¾" Pitch										
Width		Pitch		Thickness		Hinge		Materials		
Inches	mm	Inches	mm	Inches	mm	Inches	mm	Base chain	Flight	
3 ¼	82,6	¾	19,05	0.157	4	1.343	34	S	SS	UP
4,5	114,3	¾	19,05	0.157	4	1.343	34	S	SS	UP
6	152,4	¾	19,05	0.157	4	1.343	34	S	SS	UP
7 ½	190,5	¾	19,05	0.157	4	1.343	34	S	SS	UP



1843T - Sideflexing TAB, ½" Pitch											
Width		Pitch		Thickness		Sideflexing Radius		Hinge		Materials	
Inches	mm	Inches	mm	Inches	mm	Inches	mm	Inches	mm	Base chain	Flight
1 ¼	31,8	1 ½	12,7	0.126	3,2	10	254	0.787	20	S	SS



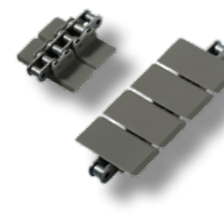
1873T - Sideflexing TAB, ¾" Pitch											
Width		Pitch		Thickness		Sideflexing Radius		Hinge		Materials	
Inches	mm	Inches	mm	Inches	mm	Inches	mm	Inches	mm	Base chain	Flight
3 ¼	82,6	¾	19,05	0.157	4	14	355,6	1.264	32,1	S	SS
4 ½	114,3	¾	19,05	0.157	4	14	355,6	1.264	32,1	S	SS
6	152,4	¾	19,05	0.157	4	18	457,2	1.264	32,1	S	SS
7 ½	190,5	¾	19,05	0.157	4	18	457,2	1.264	32,1	S	SS
10	254	¾	19,05	0.157	4	18	457,2	1.264	32,1	S	SS
12	304,8	¾	19,05	0.157	4	24	609,6	1.264	32,1	S	SS



1863T - Sideflexing TAB, ¾" Pitch, Reduced Flight Gap											
Width		Pitch		Thickness		Sideflexing Radius		Hinge		Materials	
Inches	mm	Inches	mm	Inches	mm	Inches	mm	Inches	mm	Base chain	Flight
2 ¼	57,1	¾	19,05	0.157	4	18	457,2	1.264	32,1	S	SS
3 ¼	82,6	¾	19,05	0.157	4	18	457,2	1.264	32,1	S	SS
4 ½	114,3	¾	19,05	0.157	4	18	457,2	1.264	32,1	S	SS
7 ½	190,5	¾	19,05	0.157	4	18	609,6	1.264	32,1	S	SS
12	304,8	¾	19,05	0.157	4	18	609,6	1.264	32,1	S	SS
16	406,4	¾	19,05	0.157	4	29,528	750	1.264	32,1	S	SS

FliteTop[®]

Two-piece plastic flights.



843 - Straight Running, ½" Pitch											
Width		Pitch		Thickness		Hinge				Materials	
Inches	mm	Inches	mm	Inches	mm	Inches	mm	Base chain	Flight		
1 3/8	34,9	½	12,7	0.126	3,2	0.811	20,6	S	SS		UP
2	50,8	½	12,7	0.126	3,2	0.811	20,6	S	SS		UP
3 ¼	82,6	½	12,7	0.126	3,2	0.811	20,6	S	SS		UP

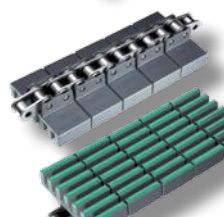


845 - Straight Running, ½" Pitch, Bidirectional											
Width		Pitch		Thickness		Gap		Hinge		Materials	
Inches	mm	Inches	mm	Inches	mm	Inches	mm	Inches	mm	Base chain	Flight
1 3/8	34,9	½	12,7	0.126	3,2	0.008	0,2	0.811	20,6	S	SS
1.57	40	½	12,7	0.126	3,2	0.008	0,2	0.811	20,6	S	SS
62	50,8	½	12,7	0.126	3,2	0.008	0,2	0.811	20,6	S	SS



RR 845 - Straight Running, ½" Pitch, Bidirectional, Raised Rib											
Width		Pitch		Thickness		Gap		Hinge		Materials	
Inches	mm	Inches	mm	Inches	mm	Inches	mm	Inches	mm	Base chain	Flight
1.57	40	½	12,7	0.480	12,2	0.008	0,2	0.811	20,6	S*	UP
2.11	53,6	½	12,7	0.480	12,2	0.008	0,2	0.11	20,6	S*	UP

*with FDA nickel plating

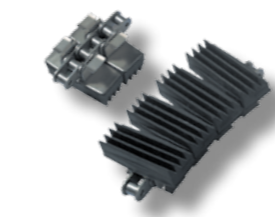


NEW HF RR 845 - Straight running, ½" Pitch, Bidirectional, Rubberized raised rib											
Width		Pitch		Thickness		Gap		Hinge		Materials	
Inches	mm	Inches	mm	Inches	mm	Inches	mm	Inches	mm	Base chain	Flight
1.52	38,5	½	12,7	0.480	12,2	0.016	0,4	0.811	20,6	S*	PP
2.19	55,5	½	12,7	0.480	12,2	0.016	0,4	0.811	20,6	S*	PP

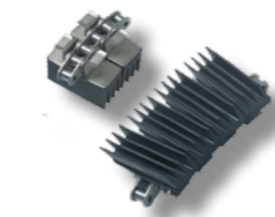
*with FDA nickel plating

FliteTop[®]

Gripper chains.



GV 1874T - Two-Piece Gripper Chains, ¾" Pitch, Steel Flights, Short Fingers												
Width		Pitch		Thickness		Sideflexing Radius		Hinge		Materials		
Inches	mm	Inches	mm	Inches	mm	Inches	mm	Inches	mm	Base chain	Flight	Rubber
3 ¼	82,6	¾	19,05	0.118	3	15	381	1.252	31,8	S	SS	S
4 ½	114,3	¾	19,05	0.118	3	15	381	1.252	31,8	S	SS	S



EV 1874T - Two-Piece Gripper Chains, ¾" Pitch, Steel Flights, Long Fingers												
Width		Pitch		Thickness		Sideflexing Radius		Hinge		Materials		
Inches	mm	Inches	mm	Inches	mm	Inches	mm	Inches	mm	Base chain	Flight	Rubber
3 ¼	82,6	¾	19,05	0.118	3	15	381	1.252	31,8	S	SS	S

FliteTop® LBP chains (Low Back-Line Pressure).

RANGE EXTENSION

GW 1873T - Two-Piece Gripper Chains, 3/4" Pitch, Plastic Flights, Short Fingers

Width		Pitch		Thickness		Sideflexing Radius		Hinge		Materials		
Inches	mm	Inches	mm	Inches	mm	Inches	mm	Inches	mm	Base chain	Flight	Rubber
3 3/4	82,6	3/4	19,05	0.157	4	14	355,6	1.264	32,1	S	BS SS	UP Thermo plastic

NEW Maintenance free base chain

RANGE EXTENSION

EW 1873T - Two-Piece Gripper Chains, 3/4" Pitch, Plastic Flights, Long Fingers

Width		Pitch		Thickness		Sideflexing Radius		Hinge		Materials		
Inches	mm	Inches	mm	Inches	mm	Inches	mm	Inches	mm	Base chain	Flight	Rubber
3 3/4	82,6	3/4	19,05	0.157	4	14	355,6	1.264	32,1	S	BS SS	UP Thermo plastic
4 1/2	114,3	3/4	19,05	0.157	4	14	355,6	1.264	32,1	S	BS SS	UP Thermo plastic

NEW Maintenance free base chain

RANGE EXTENSION

GD 1873T - Two-piece gripper chain, 3/4" Pitch, Plastic flights, D-Shape

Width		Pitch		Thickness		Sideflexing radius		Hinge		Materials		
Inches	mm	Inches	mm	Inches	mm	Inches	mm	Inches	mm	Base chain	Flight	Rubber
3 1/4	82,6	3/4	19,05	0.157	4	14	355,6	1.264	32,1	S	BS SS	UP Thermo plastic
7 1/2	190,5	3/4	19,05	0.157	4	18	457,2	1.264	32,1		SS	UP Thermo plastic

NEW Maintenance free base chain

GU 1873T - Two-Piece Gripper Chains, 3/4" Pitch, Plastic Flights, U-Shape

Width		Pitch		Thickness		Sideflexing Radius		Hinge		Materials		
Inches	mm	Inches	mm	Inches	mm	Inches	mm	Inches	mm	Base chain	Flight	Rubber
3 3/4	82,6	3/4	19,05	0.157	4	14	355,6	1.264	32,1	S	SS	UP Thermo plastic
4 1/2	114,3	3/4	19,05	0.157	4	14	355,6	1.264	32,1	S	SS	UP Thermo plastic

NEW

EW 1843T - Two-Piece Gripper Chains, 1/2" Pitch, Plastic Flights, Long Fingers

Width		Pitch		Thickness		Sideflexing Radius		Hinge		Materials		
Inches	mm	Inches	mm	Inches	mm	Inches	mm	Inches	mm	Base chain	Flight	Rubber
1 1/2	38,1	1/2	12,7	0.130	3,2	10	254	1.264	32,1	S	SS	UP Thermo plastic

GW 878T - One-Piece Gripper Chains, Plastic Plates, Short Fingers

Width		Pitch		Thickness		Sideflexing Radius		Hinge		Materials	
Inches	mm	Inches	mm	Inches	mm	Inches	mm	Inches	mm	Flight	Rubber
3 3/4	82,6	1 1/2	38,1	0.189	4,8	7.874	200	1.689	42,9	UP	Thermo plastic

EW 878T - One-Piece Gripper Chains, Plastic Plates, Long Fingers

Width		Pitch		Thickness		Sideflexing Radius		Hinge		Materials	
Inches	mm	Inches	mm	Inches	mm	Inches	mm	Inches	mm	Flight	Rubber
3 3/4	82,6	1 1/2	38,1	0.189	4,8	7.874	200	1.689	42,9	UP	Thermo plastic

GD 878T - One-Piece Gripper Chains, Plastic Plates, D-Shape

Width		Pitch		Thickness		Sideflexing Radius		Hinge		Materials	
Inches	mm	Inches	mm	Inches	mm	Inches	mm	Inches	mm	Flight	Rubber
3 3/4	82,6	1 1/2	38,1	0.189	4,8	7.874	200	1.689	42,9	UP	Thermo plastic

GU 878T - One-Piece Gripper Chains, Plastic Plates, U-Shape

Width		Pitch		Thickness		Sideflexing Radius		Hinge		Materials	
Inches	mm	Inches	mm	Inches	mm	Inches	mm	Inches	mm	Flight	Rubber
3 3/4	82,6	1 1/2	38,1	0.189	4,8	7.874	200	1.689	42,9	UP	Thermo plastic



LBP 821 - Straight Running, Double Hinge

Width		Pitch		Thickness		Backflexing Radius		Hinge		Materials	
Inches	mm	Inches	mm	Inches	mm	Inches	mm	Inches	mm	Plate	Roller
7 1/2	190,5	1 1/2	38,1	0.189	4,8	9.055	230	5.374	136,5	UP	UP
10	254	1 1/2	38,1	0.189	4,8	9.055	230	5.374	136,5	UP	UP
12	304,8	1 1/2	38,1	0.189	4,8	9.055	230	5.374	136,5	UP	UP

LBP 8257 - Straight Running, Heavy Duty Single Hinge

Width		Pitch		Thickness		Backflexing Radius		Hinge		Materials	
Inches	mm	Inches	mm	Inches	mm	Inches	mm	Inches	mm	Plate	Roller
7 1/2	190,5	1 1/2	38,1	0.189	4,8	11.811	300	2.244	57	UP	UP
10	254	1 1/2	38,1	0.189	4,8	11.811	300	2.244	57	UP	UP
12	304,8	1 1/2	38,1	0.189	4,8	11.811	300	2.244	57	UP	UP

LBP 882T - Sideflexing TAB, Heavy Duty Single Hinge

Width		Pitch		Thickness		Sideflexing Radius		Hinge		Materials	
Inches	mm	Inches	mm	Inches	mm	Inches	mm	Inches	mm	Plate	Roller
3 3/4	95,3	1 1/2	38,1	0.189	4,8	26.260	667	2.244	57	UP	UP
4 1/2	114,3	1 1/2	38,1	0.189	4,8	24	609,6	2.244	57	UP	UP
7 1/2	190,5	1 1/2	38,1	0.189	4,8	24	609,6	2.244	57	UP	UP
10	254	1 1/2	38,1	0.189	4,8	24	609,6	2.244	57	UP	UP
12	304,8	1 1/2	38,1	0.189	4,8	24	609,6	2.244	57	UP	UP

LBP 882M - Sideflexing Magnetic, Heavy Duty Single Hinge

Width		Pitch		Thickness		Sideflexing Radius		Hinge		Materials	
Inches	mm	Inches	mm	Inches	mm	Inches	mm	Inches	mm	Plate	Roller
7 1/2	190,5	1 1/2	38,1	0.189	4,8	24	609,6	2.244	57	UP	UP
10	254	1 1/2	38,1	0.189	4,8	24	609,6	2.244	57	UP	UP
12	304,8	1 1/2	38,1	0.189	4,8	24	609,6	2.244	57	UP	UP

FliteTop® Biplanar chains.

1700 - Sideflexing, Increased Product Support Surface

Width		Pitch		Thickness		Sideflexing Radius		Backflexing Radius		Materials	
Inches	mm	Inches	mm	Inches	mm	Inches	mm	Inches	mm	Link	
2.17	55	1.97	50	0.157	4	5.512	140	1.969	50	UP	DK2 WA

1702 - Sideflexing

Width		Pitch		Thickness		Sideflexing Radius		Backflexing Radius		Materials	
Inches	mm	Inches	mm	Inches	mm	Inches	mm	Inches	mm	Link	
2.09	53	1.97	50	0.197	5	5.512	140	1.969	50	WA	

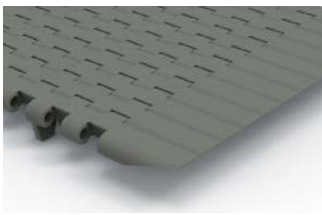
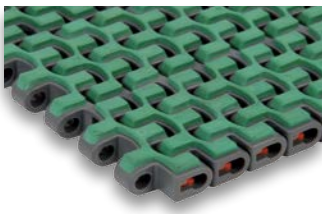
1701T - Sideflexing TAB

Width		Pitch		Thickness		Sideflexing Radius		Backflexing Radius		Materials	
Inches	mm	Inches	mm	Inches	mm	Inches	mm	Inches	mm	Link	
2.09	53	1.97	50	0.197	5	5.512	140	1.969	50	UP	DK2 WA



Matveyor®

Light duty short pitch.



600 - Modular Belts and Dedicated Widths, Metric Standard, Solid Top

Width		Pitch		Thickness		Tracking Guide		Surface	Materials	
Inches	mm	Inches	mm	Inches	mm				Module	
3.35	85	½	12,7	0.343	8,7	Yes		Solid	UP	DK ² PP
6.69" (170 mm) or wider in 3.35" (85 mm) increments		½	12,7	0.343	8,7	Yes		Solid	UP	DK ² PP

600G ATM - Active Transfer Modules, Metric Standard, Solid Top

	Width		Pitch		Thickness		Tracking guide		Surface	Materials	
	Inches	mm	Inches	mm	Inches	mm				Module	
Left version	4.33	110	½	12,7	0.343	8,7	Yes		Solid	UP	DK ²
Right version	4.33	110	½	12,7	0.343	8,7	Yes		Solid	UP	DK ²

500 - Modular Belts and Dedicated Widths, Metric Standard, Flush Grid

Width		Pitch		Thickness		Tracking Guide		Surface	Materials	
Inches	mm	Inches	mm	Inches	mm				Module	
3.35	85	½	12,7	0.343	8,7	Yes		Flush Grid	UP	PP
6.69" (170 mm) or wider in 3.35" (85 mm) increments		½	12,7	0.343	8,7	Yes		Flush Grid	UP	PP

HF 500 - Modular Belts and Dedicated Widths, Metric Standard, Rubberized surface, Full Cover

Width		Pitch		Thickness		Tracking Guide		Surface	Materials	
Inches	mm	Inches	mm	Inches	mm				Module	Rubber
2	50,8	½	12,7	0.343	8,7	No		Rubber	PP	Thermo plastic
3.35	85	½	12,7	0.343	8,7	Yes		Rubber	PP	Thermo plastic
6.69" (170 mm) or wider in 3.35" (85 mm) increments		½	12,7	0.343	8,7	Yes		Rubber	PP	Thermo plastic

NEW 300 - Modular Belts and Dedicated Widths, Inch Standard, Solid Top

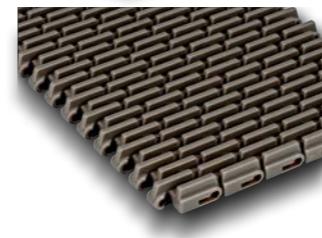
Width		Pitch		Thickness		Tracking guide		Surface	Materials	
Inches	mm	Inches	mm	Inches	mm				Module	
3	76,2	½	12,7	0.343	8,7	No		Solid	UP	DK ² PP
4 ½	114,3	½	12,7	0.343	8,7	Yes		Solid	UP	DK ² PP
6" (152,4 mm) or wider in 3" (76,2 mm) increments		½	12,7	0.343	8,7	No		Solid	UP	DK ² PP

NEW 300G ATM - Active Transfer Modules, Inch Standard, Solid Top

	Width		Pitch		Thickness		Tracking guide		Surface	Materials	
	Inches	mm	Inches	mm	Inches	mm				Module	
Left version	6.30	160	½	12,7	0.343	8,7	Yes		Solid	UP	DK ²
Right version	6.30	160	½	12,7	0.343	8,7	Yes		Solid	UP	DK ²

NEW 200 - Modular Belts and Dedicated Widths, Inch Standard, Flush Grid

Width		Pitch		Thickness		Tracking guide		Surface	Materials	
Inches	mm	Inches	mm	Inches	mm				Module	
3	76,2	½	12,7	0.343	8,7	No		Flush grid	UP	PP
6" (152,4 mm) or wider in 3" (76,2 mm) increments		½	12,7	0.343	8,7	No		Flush grid	UP	PP



NEW HF 200 - Modular Belts and Dedicated Widths, Inch Standard, Rubberized Surface, Full Cover

Width		Pitch		Thickness		Tracking guide		Surface	Materials	
Inches	mm	Inches	mm	Inches	mm				Module	Rubber
3	76,2	½	12,7	0.343	8,7	No		Rubber	UP	PP
6" (152,4 mm) or wider in 3" (76,2 mm) increments		½	12,7	0.343	8,7	No		Rubber	UP	PP

Matveyor®

Light duty.

1600 - Modular Belts and Dedicated Widths, Metric Standard, Solid Top

Width		Pitch		Thickness		Tracking Guide		Surface	Materials	
Inches	mm	Inches	mm	Inches	mm				Module	
3.30	83,8	1	25,4	0.343	8,7	Yes		Solid	UP	DK ²
3.35	85	1	25,4	0.343	8,7	Yes		Solid	UP	DK ²
6.69" (170 mm) or wider in 3.35" (85 mm) increments		1	25,4	0.343	8,7	Yes		Solid	UP	DK ²

1600G ATM - Active Transfer Modules, Metric Standard, Solid Top

	Width		Pitch		Thickness		Tracking guide		Surface	Materials	
	Inches	mm	Inches	mm	Inches	mm				Module	
Left version	4.33	110	1	25,4	0.343	8,7	Yes		Solid	UP	DK ²
Right version	4.33	110	1	25,4	0.343	8,7	Yes		Solid	UP	DK ²
Right version	7.68	195	1	25,4	0.343	8,7	Yes		Solid	UP	DK ²

1500 - Modular Belts and Dedicated Widths, Metric Standard, Flush Grid

Width		Pitch		Thickness		Tracking Guide		Surface	Materials	
Inches	mm	Inches	mm	Inches	mm				Module	
3.35	85	1	25,4	0.343	8,7	Yes		Flush Grid	UP	DK ²
6.69" (170 mm) or wider in 3.35" (85 mm) increments		1	25,4	0.343	8,7	Yes		Flush Grid	UP	DK ²

1500G ATM - Active Transfer Modules, Metric Standard, Flush Grid

	Width		Pitch		Thickness		Tracking guide		Surface	Materials	
	Inches	mm	Inches	mm	Inches	mm				Module	
Right version	7.68	195	1	25,4	0.343	8,7	Yes		Flush grid	UP	DK ²

NEW RR 1500 - Modular Belts, Metric Standard, Raised Rib

Width		Pitch		Thickness		Tracking Guide		Surface	Materials	
Inches	mm	Inches	mm	Inches	mm				Module	
6.69" (170 mm) or wider in 3.35" (85 mm) increments		1	25,4	0.562	14,3	No		Raised Rib	UP	



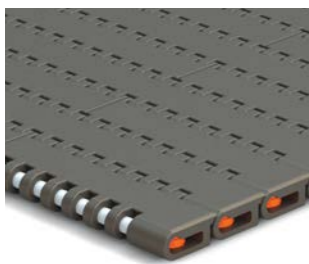
RR 1600 - Dedicated Widths, Raised Rib									
Width		Pitch		Thickness		Tracking Guide	Surface	Materials	
Inches	mm	Inches	mm	Inches	mm			Module	
1.18	30	1	25,4	0.563	14,3	No	Raised Rib	UP	PP
1.52	38,5	1	25,4	0.563	14,3	No	Raised Rib	UP	PP
1.85	47	1	25,4	0.563	14,3	No	Raised Rib	UP	PP
2.28	58	1	25,4	0.563	14,3	No	Raised Rib	UP	PP



NEW HF 1600 - Modular Belts and Dedicated Widths, Metric Standard, Rubberized Surface, Full Cover									
Width		Pitch		Thickness		Tracking guide	Surface	Materials	
Inches	mm	Inches	mm	Inches	mm			Module	Rubber
3.35	85	1	25,4	0.343	8,7	Yes	Rubber	UP	PP
6.69" (170 mm) or wider in 3.35" (85 mm) increments		1	25,4	0.343	8,7	Yes	Rubber	UP	PP



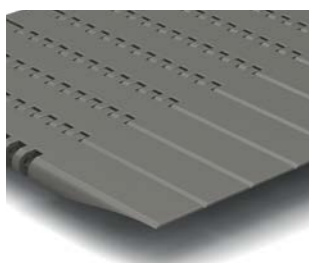
NEW HFS 1600 - Modular Belts, Metric Standard, Rubberized Surface, Side Indent									
Width		Pitch		Thickness		Tracking guide	Surface	Materials	
Inches	mm	Inches	mm	Inches	mm			Module	Rubber
10.04" (255 mm) or wider in 3.35" (85 mm) increments		1	25,4	0.343	8,7	Yes	Rubber	UP	PP
10.04" (255 mm) or wider in 3.35" (85 mm) increments		1	25,4	0.343	8,7	Yes	Rubber	UP	PP



7300 - Modular Belts and Dedicated Widths, Inch Standard, Solid Top									
Width		Pitch		Thickness		Tracking Guide	Surface	Materials	
Inches	mm	Inches	mm	Inches	mm			Module	
3 1/4	82,6	3/4	19,05	0.343	8,7	Yes	Solid	UP	DK ²
4 1/2	114,3	3/4	19,05	0.343	8,7	Yes	Solid	UP	DK ²
6	152,4	3/4	19,05	0.343	8,7	Yes	Solid	UP	DK ²
7 1/2	190,5	3/4	19,05	0.343	8,7	Yes	Solid	UP	DK ²
9" (228,6mm) or wider in 3" (76,2mm) increments		3/4	19,05	0.343	8,7	No	Solid	UP	DK ²



7200 - Modular Belts and Dedicated Widths, Inch Standard, Flush Grid									
Width		Pitch		Thickness		Tracking Guide	Surface	Materials	
Inches	mm	Inches	mm	Inches	mm			Module	
3 1/4	82,6	3/4	19,05	0.343	8,7	Yes	Flush Grid	UP	DK ²
4 1/2	114,3	3/4	19,05	0.343	8,7	Yes	Flush Grid	UP	DK ²
6	152,4	3/4	19,05	0.343	8,7	Yes	Flush Grid	UP	DK ²
7 1/2	190,5	3/4	19,05	0.343	8,7	Yes	Flush Grid	UP	DK ²
9" (228,6mm) or wider in 3" (76,2mm) increments		3/4	19,05	0.343	8,7	No	Flush Grid	UP	DK ²



7300G ATM - Active Transfer Modules, Inch Standard, Solid Top									
Width		Pitch		Thickness		Tracking Guide	Surface	Materials	
Inches	mm	Inches	mm	Inches	mm			Module	
Left version	6.3	160	3/4	19,05	0.343	8,7	Yes	Solid	UP
Right version	6.3	160	3/4	19,05	0.343	8,7	Yes	Solid	UP
Left version	9.3	236,2	3/4	19,05	0.343	8,7	Yes	Solid	UP
Right version	9.3	236,2	3/4	19,05	0.343	8,7	Yes	Solid	UP

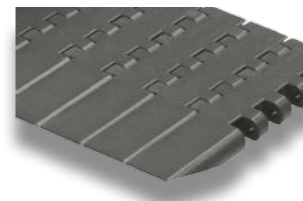


1110 - Modular Belts, Inch Standard, Raised Rib									
Width		Pitch		Thickness		Tracking Guide	Surface	Materials	
Inches	mm	Inches	mm	Inches	mm			Module	
6" (152,4 mm) or wider in 3" (76,2 mm) increments		1	25,4	0.591	15	No	Raised Rib	UP	PP

Matveyor® Heavy duty.



USPM - Modular Belts and Dedicated Widths, Metric Standard, Solid Top									
Width		Pitch		Thickness		Tracking Guide	Surface	Materials	
Inches	mm	Inches	mm	Inches	mm			Module	
3.30	83,8	1	25,4	0.500	12,7	Yes	Solid	UP	DK ²
6.69" (170 mm) or wider in 3.35" increments		1	25,4	0.500	12,7	Yes	Solid	UP	DK ²



USPMG ATM - Active Transfer Modules, Metric Standard, Solid Top									
Width		Pitch		Thickness		Tracking guide	Surface	Materials	
Inches	mm	Inches	mm	Inches	mm			Module	
Left version	5.02	127,5	1	25,4	0.500	12,7	Yes	Solid	UP
Right version	5.02	127,5	1	25,4	0.500	12,7	Yes	Solid	UP



HF USPM - Modular Belts and Dedicated Widths, Metric Standard, Rubberized Surface, Full Cover									
Width		Pitch		Thickness		Tracking Guide	Surface	Materials	
Inches	mm	Inches	mm	Inches	mm			Module	Rubber
3.35	85	1	25,4	0.500	12,7	Yes	Rubber	UP	PP
6.69" (170 mm) or wider in 3.35" (85 mm) increments		1	25,4	0.500	12,7	Yes	Rubber	UP	PP

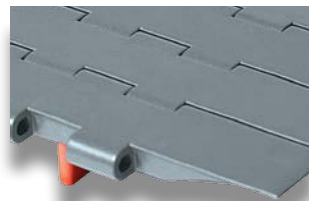
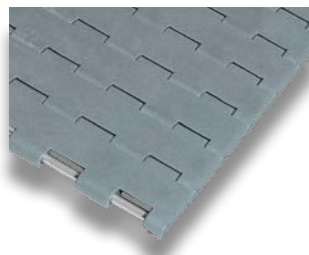


HFS USPM - Modular Belts, Metric Standard, Rubberized Surface, Side Indent									
Width		Pitch		Thickness		Tracking Guide	Surface	Materials	
Inches	mm	Inches	mm	Inches	mm			Module	Rubber
10.04" (255 mm) or wider in 3.35" (85 mm) increments		1	25,4	0.500	12,7	Yes	Rubber	UP	PP



LBP USPM - Modular Belts and Dedicated Widths, Metric Standard, LBP Rollers									
Width		Pitch		Thickness		Tracking Guide	Surface	Materials	
Inches	mm	Inches	mm	Inches	mm			Module	Roller
3.35	85	1	25,4	0.500	12,7	Yes	Rollers	UP	UP
6.69" (170 mm) or wider in 3.35" (85 mm) increments		1	25,4	0.500	12,7	Yes	Rollers	UP	UP

Matveyor® Sideflexing chains.



USP - Modular Belts and Dedicated Widths, Inch Standard, Solid Top

Width		Pitch		Thickness		Tracking Guide	Surface	Materials	
Inches	mm	Inches	mm	Inches	mm			Module	
3 ¼	82,6	1	25,4	0.500	12,7	Yes	Solid	UP	DK ² AR
4 ½	114,3	1	25,4	0.500	12,7	Yes	Solid	UP	DK ² AR
7 ½	190,5	1	25,4	0.500	12,7	Yes	Solid	UP	DK ² AR
6" (152,4 mm) or wider in 3" (76,2 mm) increments		1	25,4	0.500	12,7	No	Solid	UP	DK ² AR

USPG ATM - Active Transfer Modules, Inch Standard, Solid Top

	Width		Pitch		Thickness		Tracking guide	Surface	Materials	
	Inches	mm	Inches	mm	Inches	mm			Module	
Left version	6	152,4	1	25,4	0.500	12,7	Yes	Solid	UP	DK ² AR
Left version	9	228,6	1	25,4	0.500	12,7	Yes	Solid	UP	DK ² AR
Right version	6	152,4	1	25,4	0.500	12,7	Yes	Solid	UP	DK ² AR
Right version	9	228,6	1	25,4	0.500	12,7	Yes	Solid	UP	DK ² AR

Matveyor® ULTOP® Heavy duty UCC.

UCC - Dedicated Widths, Inch Standard, Solid Top

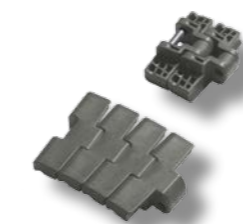
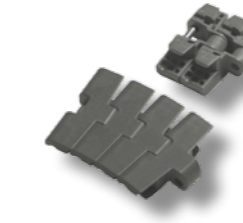
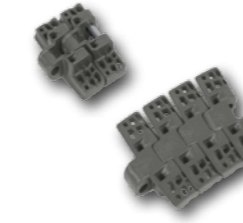
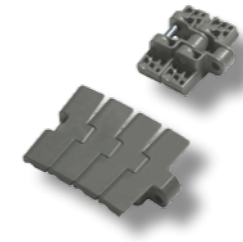
Width		Pitch		Thickness		Tracking Guide	Surface	Materials	
Inches	mm	Inches	mm	Inches	mm			Module	
3 ¼	82,6	1 ½	38,1	0.500	12,7	No	Solid	DK ²	ULF
4 ½	114,3	1 ½	38,1	0.500	12,7	No	Solid	DK ²	ULF
6	152,4	1 ½	38,1	0.500	12,7	No	Solid	DK ²	ULF
7 ½	190,5	1 ½	38,1	0.500	12,7	No	Solid	DK ²	ULF
12	304,8	1 ½	38,1	0.500	12,7	No	Solid	DK ²	ULF
15	381,0	1 ½	38,1	0.500	12,7	No	Solid	DK ²	ULF
18	457,2	1 ½	38,1	0.500	12,7	No	Solid	DK ²	ULF
24	609,6	1 ½	38,1	0.500	12,7	No	Solid	DK ²	ULF

UCCG ATM - Active Transfer Modules, Inch Standard, Solid Top

Width		Pitch		Thickness		Tracking Guide	Surface	Materials	
Inches	mm	Inches	mm	Inches	mm			Module	
6 ½	165,1	1 ½	38,1	0.500	12,7	Yes	Solid	DK ²	ULF
9 ½	241,3	1 ½	38,1	0.500	12,7	Yes	Solid	DK ²	ULF

UCC 138 - Dedicated Widths, Inch Standard, Solid Top

Width		Pitch		Thickness		Tracking Guide	Surface	Materials	
Inches	mm	Inches	mm	Inches	mm			Module	
1.40	34,9	¾	19,05	0.591	15	No	Solid	ULF	



783M - Magnetic, Solid Top, Light Duty

Width		Pitch		Thickness		Sideflexing radius		Surface	Materials	
Inches	mm	Inches	mm	Inches	mm	Inches	mm		Plate	
3.30	83,8	1	25,4	0.343	8,7	19.685	500	Solid	UP	DK ²

782M - Magnetic, Flush Grid, Light Duty

Width		Pitch		Thickness		Sideflexing radius		Surface	Materials	
Inches	mm	Inches	mm	Inches	mm	Inches	mm		Plate	
3.30	83,8	1	25,4	0.343	8,7	19.685	500	Flush Grid	UP	DK ²

783T - TAB, Solid Top, Light Duty

Width		Pitch		Thickness		Sideflexing radius		Surface	Materials	
Inches	mm	Inches	mm	Inches	mm	Inches	mm		Plate	
3 ¼	82,6	1	25,4	0.343	8,7	18	457,2	Solid	UP	DK ²
3.30	83,8	1	25,4	0.343	8,7	18	457,2	Solid	UP	DK ²
4 ½	114,3	1	25,4	0.343	8,7	24	609,6	Solid	UP	DK ²

793M - Magnetic, Solid Top, Heavy Duty

Width		Pitch		Thickness		Sideflexing radius		Surface	Materials	
Inches	mm	Inches	mm	Inches	mm	Inches	mm		Plate	
3.30	83,8	1	25,4	0.500	12,7	19.685	500	Solid	UP	DK ² AR
4 ½	114,3	1	25,4	0.500	12,7	19.685	500	Solid	UP	DK ² AR

793T - TAB, Solid Top, Heavy Duty

Width		Pitch		Thickness		Sideflexing radius		Surface	Materials	
Inches	mm	Inches	mm	Inches	mm	Inches	mm		Plate	
3 ¼	82,6	1	25,4	0.500	12,7	18	457,2	Solid	UP	DK ² AR
3.30	83,8	1	25,4	0.500	12,7	18	457,2	Solid	UP	DK ² AR
4 ½	114,3	1	25,4	0.500	12,7	24	609,6	Solid	UP	DK ² AR

NEW 793L - Low center chain, Solid Top, Heavy Duty

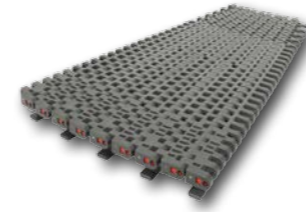
Width		Pitch		Thickness		Sideflexing radius		Surface	Materials	
Inches	mm	Inches	mm	Inches	mm	Inches	mm		Plate	
4 ½	114,3	1	25,4	0.500	12,7	19.685	500	Solid	UP	DK ²

Matveyor®

Heavy duty raised rib.

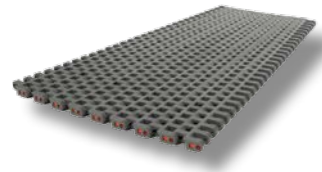


3120 - Modular Belts, Inch Standard, Raised Rib									
Width		Pitch		Thickness		Tracking Guide		Surface	Materials
Inches	mm	Inches	mm	Inches	mm				Module
12" (304,8mm) or wider in 3" (76,2mm) increments		2	50,8	0.941	23,9	No		Raised Rib	PP

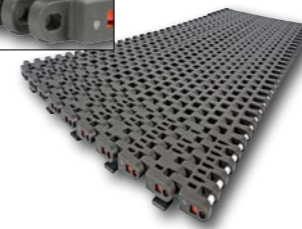


Matveyor®

Heavy duty sideflexing belts.

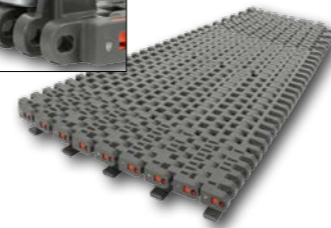


2555 - Modular Belts, Metric Standard									
Width		Pitch		Thickness		Medium Sideflexing Radius		Surface	Materials
Inches	mm	Inches	mm	Inches	mm	Inches	mm		Module
10.04	255	1 ¼	31,75	0.500	12,7	23.622	600	Flush Grid	UP
13.39	340	1 ¼	31,75	0.500	12,7	31.496	800	Flush Grid	UP
16.73	425	1 ¼	31,75	0.500	12,7	39.370	1000	Flush Grid	UP
20.08	510	1 ¼	31,75	0.500	12,7	47.244	1200	Flush Grid	UP
23.43	595	1 ¼	31,75	0.500	12,7	55.118	1400	Flush Grid	UP
26.77	680	1 ¼	31,75	0.500	12,7	62.992	1600	Flush Grid	UP
30.12	765	1 ¼	31,75	0.500	12,7	70.866	1800	Flush Grid	UP
33.46	850	1 ¼	31,75	0.500	12,7	78.740	2000	Flush Grid	UP

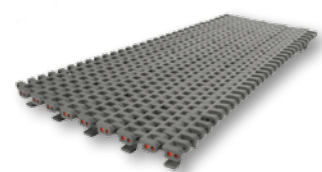


2555HT-SR - Modular Belts, Metric Standard, TAB, Reinforced Outer Modules, Reduced Sideflexing Radius									
Width		Pitch		Thickness		Medium Sideflexing Radius		Surface	Materials
Inches	mm	Inches	mm	Inches	mm	Inches	mm		Module
13.39	340	1 ¼	31,75	0.500	12,7	19.685	500	Flush Grid	UP
16.73	425	1 ¼	31,75	0.500	12,7	23.622	600	Flush Grid	UP
20.08	510	1 ¼	31,75	0.500	12,7	31.496	800	Flush Grid	UP
23.43	595	1 ¼	31,75	0.500	12,7	39.370	1000	Flush Grid	UP
26.77	680	1 ¼	31,75	0.500	12,7	47.244	1200	Flush Grid	UP
30.12	765	1 ¼	31,75	0.500	12,7	55.118	1400	Flush Grid	UP
33.46	850	1 ¼	31,75	0.500	12,7	62.992	1600	Flush Grid	UP

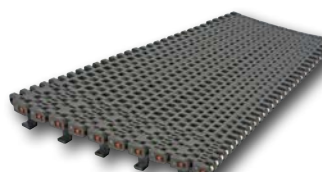
2555HTB - Modular Belts, Metric Standard, TAB+ Bearing, Reinforced Outer Module									
Width		Pitch		Thickness		Medium Sideflexing Radius		Surface	Materials
Inches	mm	Inches	mm	Inches	mm	Inches	mm		Module
10.04	255	1 ¼	31,75	0.500	12,7	23.622	600	Flush Grid	UP
13.39	340	1 ¼	31,75	0.500	12,7	31.496	800	Flush Grid	UP
16.73	425	1 ¼	31,75	0.500	12,7	39.370	1000	Flush Grid	UP
20.08	510	1 ¼	31,75	0.500	12,7	47.244	1200	Flush Grid	UP
23.43	595	1 ¼	31,75	0.500	12,7	55.118	1400	Flush Grid	UP
26.77	680	1 ¼	31,75	0.500	12,7	62.992	1600	Flush Grid	UP
30.12	765	1 ¼	31,75	0.500	12,7	70.866	1800	Flush Grid	UP
33.46	850	1 ¼	31,75	0.500	12,7	78.740	2000	Flush Grid	UP



2555HTB-SR Modular Belts, Metric Standard, TAB+ Bearing, Reinforced Outer Modules, Reduced Sideflexing Radius									
Width		Pitch		Thickness		Medium Sideflexing Radius		Surface	Materials
Inches	mm	Inches	mm	Inches	mm	Inches	mm		Module
13.39	340	1 ¼	31,75	0.500	12,7	19.685	500	Flush Grid	UP
16.73	425	1 ¼	31,75	0.500	12,7	23.622	600	Flush Grid	UP
20.08	510	1 ¼	31,75	0.500	12,7	31.496	800	Flush Grid	UP
23.43	595	1 ¼	31,75	0.500	12,7	39.370	1000	Flush Grid	UP
26.77	680	1 ¼	31,75	0.500	12,7	47.244	1200	Flush Grid	UP
30.12	765	1 ¼	31,75	0.500	12,7	55.118	1400	Flush Grid	UP
33.46	850	1 ¼	31,75	0.500	12,7	62.992	1600	Flush Grid	UP



2555T - Modular Belts, Metric Standard, TAB									
Width		Pitch		Thickness		Medium Sideflexing Radius		Surface	Materials
Inches	mm	Inches	mm	Inches	mm	Inches	mm		Module
10.04	255	1 ¼	31,75	0.500	12,7	23.622	600	Flush Grid	UP
13.39	340	1 ¼	31,75	0.500	12,7	31.496	800	Flush Grid	UP
16.73	425	1 ¼	31,75	0.500	12,7	39.370	1000	Flush Grid	UP
20.08	510	1 ¼	31,75	0.500	12,7	47.244	1200	Flush Grid	UP
23.43	595	1 ¼	31,75	0.500	12,7	55.118	1400	Flush Grid	UP
26.77	680	1 ¼	31,75	0.500	12,7	62.992	1600	Flush Grid	UP
30.12	765	1 ¼	31,75	0.500	12,7	70.866	1800	Flush Grid	UP
33.46	850	1 ¼	31,75	0.500	12,7	78.740	2000	Flush Grid	UP



2555HT - Modular Belts, Metric Standard, TAB, Reinforced Outer Modules									
Width		Pitch		Thickness		Medium Sideflexing Radius		Surface	Materials
Inches	mm	Inches	mm	Inches	mm	Inches	mm		Module
10.04	255	1 ¼	31,75	0.500	12,7	23.622	600	Flush Grid	UP
13.39	340	1 ¼	31,75	0.500	12,7	31.496	800	Flush Grid	UP
16.73	425	1 ¼	31,75	0.500	12,7	39.370	1000	Flush Grid	UP
20.08	510	1 ¼	31,75	0.500	12,7	47.244	1200	Flush Grid	UP
23.43	595	1 ¼	31,75	0.500	12,7	55.118	1400	Flush Grid	UP
26.77	680	1 ¼	31,75	0.500	12,7	62.992	1600	Flush Grid	UP
30.12	765	1 ¼	31,75	0.500	12,7	70.866	1800	Flush Grid	UP
33.46	850	1 ¼	31,75	0.500	12,7	78.740	2000	Flush Grid	UP

ENDURO maintenance free chains.



SINGLE STRAND - European series									
REGINA reference	Pitch		Roller diameter		Inside width		Pin diameter		Materials
	Inches	mm	Inches	mm	Inches	mm	Inches	mm	
126BS	1/2	12,70	0.335	8,51	0.305	7,75	0.175	4,45	BS
136BS	5/8	15,88	0.400	10,16	0.380	9,65	0.200	5,09	BS
140BS	3/4	19,05	0.475	12,07	0.460	11,68	0.225	5,72	BS
147BS	1	25,40	0.625	15,88	0.670	17,02	0.326	8,28	BS

SINGLE STRAND - American series									
REGINA reference	Pitch		Roller diameter		Inside width		Pin diameter		Materials
	Inches	mm	Inches	mm	Inches	mm	Inches	mm	
A40BS	1/2	12,70	0.312	7,92	0.309	7,85	0.157	3,98	BS
A50BS	5/8	15,88	0.400	10,16	0.370	9,40	0.200	5,09	BS
A60BS	3/4	19,05	0.469	11,91	0.495	12,57	0.225	5,72	BS
A80BS	1	25,40	0.625	15,88	0.620	15,75	0.313	7,94	BS

DOUBLE STRAND - European series									
REGINA reference	Pitch		Roller diameter		Inside width		Pin diameter		Materials
	Inches	mm	Inches	mm	Inches	mm	Inches	mm	
226BS	1/2	12,70	0.335	8,51	0.305	7,75	0.175	4,45	BS
236BS	5/8	15,88	0.400	10,16	0.380	9,65	0.200	5,09	BS
240BS	3/4	19,05	0.475	12,07	0.460	11,68	0.225	5,72	BS
247BS	1	25,40	0.625	15,88	0.670	17,02	0.326	8,28	BS

DOUBLE STRAND - American series									
REGINA reference	Pitch		Roller diameter		Inside width		Pin diameter		Materials
	Inches	mm	Inches	mm	Inches	mm	Inches	mm	
A40BS-2	1/2	12,70	0.312	7,92	0.309	7,85	0.157	3,98	BS
A50BS-2	5/8	15,88	0.400	10,16	0.370	9,40	0.200	5,09	BS
A60BS-2	3/4	19,05	0.469	11,91	0.495	12,57	0.225	5,72	BS
A80BS-2	1	25,40	0.625	15,88	0.620	15,75	0.313	7,94	BS

Components.

Combs.



Transfer Combs for Raised Rib Belts and Chains

For Belts/Chain:
RR 845
RR 1500
RR 1600
1110
3120

Availability of:
Short Fingers
Long Fingers

Roller transfer plates.



For FliteTop® LBP Chains and Matveyor® LBP Modular Belts

Provide to:
Head to Tail Transfers
90° Product Transfers

Availability of:
2-3-5 roller rows
85 & 115 mm widths

Molded sprockets.



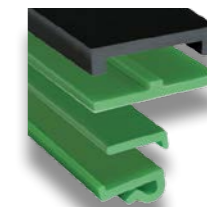
For FliteTop® Chains and Matveyor® ULTOP® Modular Belts

Sprockets Type:
Drive Sprockets
Idler Sprockets
Idler Wheels

Availability of:
Solid & Split Sprockets

Bore Type:
Square (Metric - Inch)
Round (Metric - Inch)

Guides profiles.



For FliteTop® Chains and Matveyor® ULTOP® Modular Belts

Magnetic curves.



For FliteTop® and Matveyor® Chains

Machined sprockets.



For FliteTop® Chains and Matveyor® ULTOP® Modular Belts

Sprockets Type:
Drive Sprockets
Idler Sprockets
Idler Wheels

Availability of:
Solid & Split Sprockets

Bore Type:
Square (Metric - Inch)
Round (Metric - Inch)

Tab curves.



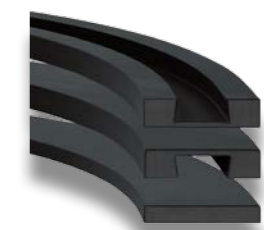
For FliteTop® and Matveyor® Chains

Turning discs.



For FliteTop® 1700 Series Chains

Bevel curves.



For FliteTop® Chains



REGINA CHAIN

PERFORMANCE IN MOTION

ITALY

REGINA CATENE CALIBRATE S.p.A.
HEAD OFFICE:
Via Monza, 90
23870 Cernusco Lombardone (LC) - Italy
Tel. +39 039 99801
Fax +39 039 9905229
sales@reginachain.net

USA

REGINA USA, INC.
305 E. Mahn Court
Oak Creek, WI 53154 - USA
Tel. 001 414 5710032
Fax 001 414 5710225
sales.us@reginachain.net

FRANCE

REGINA INDUSTRIE s.a.r.l.
Z.A.C. des Chatelliers
34 Rue des Frères Lumière
45800 Saint Jean De Braye - France
Tel. +33 238 836363
Fax +33 238 836413
sales.fr@reginachain.net

MEXICO

REGINA de MEXICO S.A. de C.V.
Av. Aviación 5051-28
Col. San Juan de Ocotan
45019 Zapopan, Jalisco - Mexico
Tel. +52 33 3627 4043
Fax +52 33 3627 3930
sales.mx@reginachain.net

CHINA

REGINA TIANJIN CHAIN & BELT CO., LTD.
Xi Qing Economic Development Area,
Xiang Rui Road n. 17
Tian Xiang Industrial Zone
300385 Tian Jin - China
Tel. +86 22 83961223
Fax +86 22 83961202
sales.cn@reginachain.net

UNITED KINGDOM

REGINA INTERNATIONAL LIMITED
Unit 1, Dyneley Road,
Greenbank Business Park
Whitebirk, Blackburn,
Lancs BB1 3AB - United Kingdom
Tel. +44 1254 661116
Fax +44 1254 59456
sales.uk@reginachain.net

ARGENTINA

REGINA INTERNATIONAL S.A.
Diagonal 190,
1788-1655 José Leon Suarez
Prov. Buenos Aires - Argentina
Tel. +54 11 47296667
Fax +54 11 47203210
sales.ar@reginachain.net

GERMANY

REGINA
Tel. +49 2662939196
Fax +49 2662939198
sales.de@reginachain.net

SPAIN

CADENAS REGINA ESPAÑA, S.L.
Calle Industria, 37
08120 La Llagosta - Barcelona - España
Tel. +34 93 5742838
Fax +34 93 5740735
sales.es@reginachain.net

THE NETHERLANDS

REGINA
Tel. +31 610681114
sales.nl@reginachain.net



www.reginachain.net